



成都福誉科技有限公司

FUYU TECHNOLOGY CO., LTD

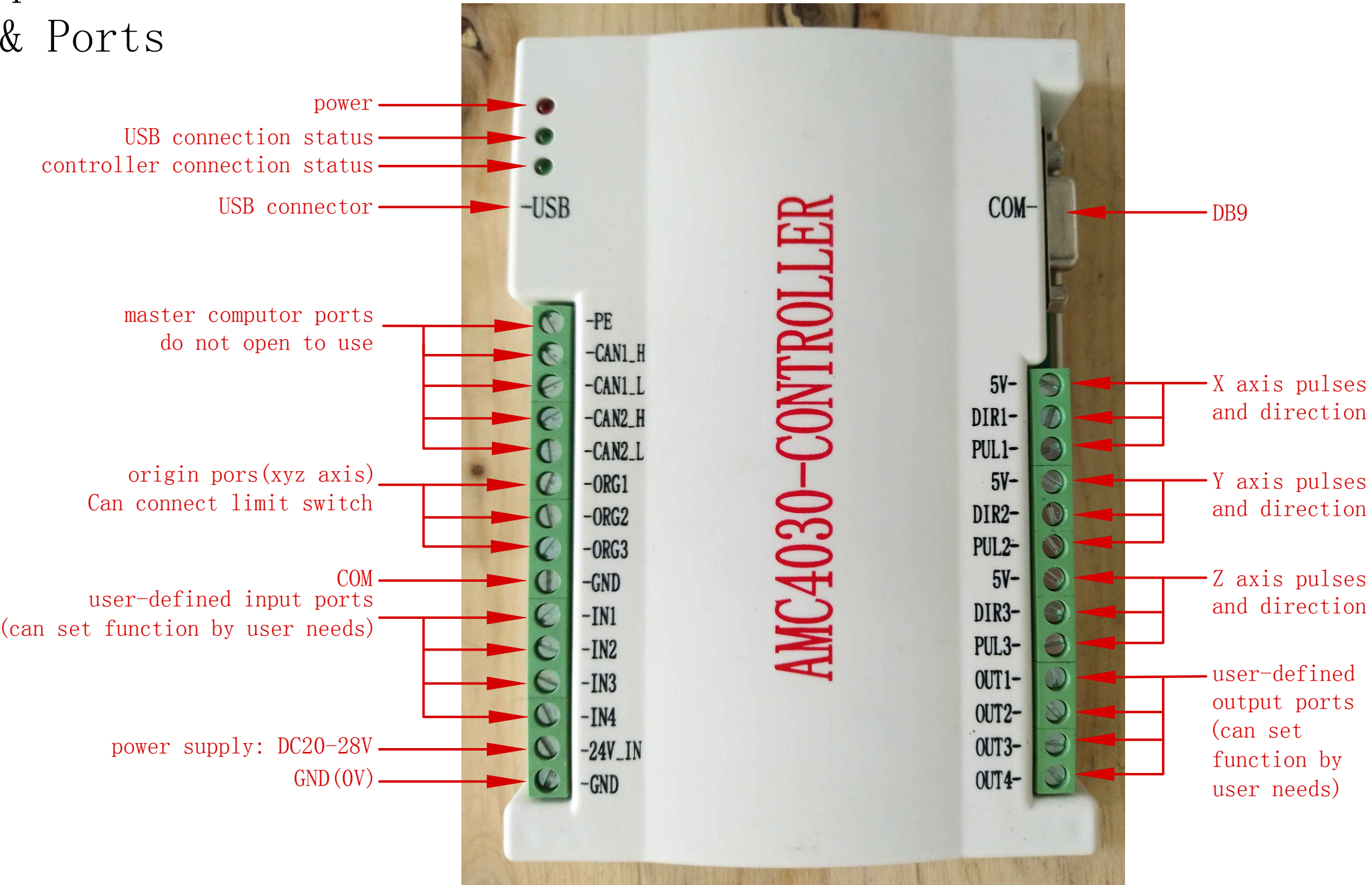
# AMC4030-3 axis controller

Program Using Handbook

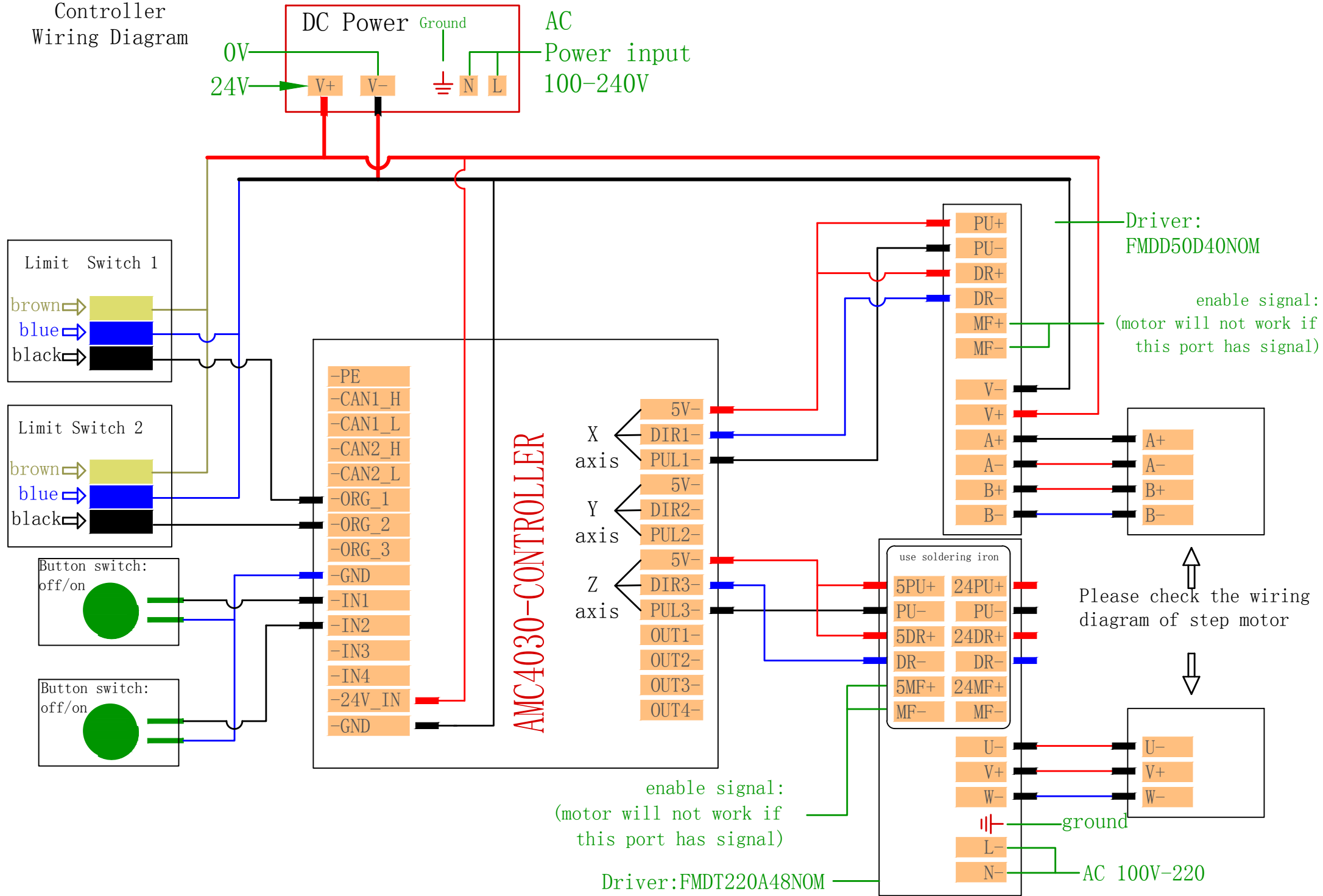
Edition: V3.0.0.3

Notes: 1. the program only available in win7 or win10!  
2. the controller do not support secondary development by other program

# Appearance & Ports



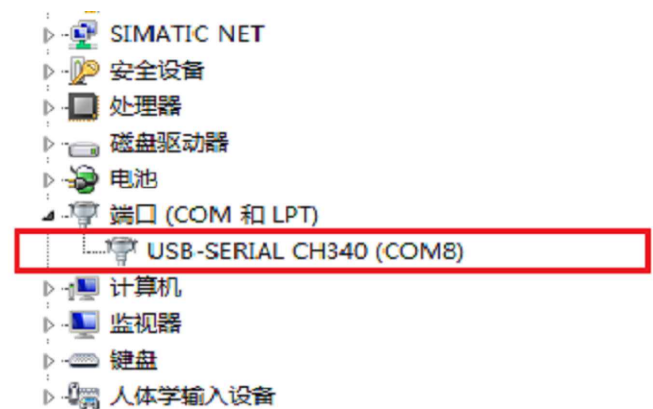
Controller  
Wiring Diagram



# AMC4030-3 axis controller USB driver set up

## Step1

名称	修改日期	类型
DRVSETUP64	17.8.29 12:08	文件夹
安装失败解决办法	17.8.29 12:08	文件夹
CH341PT.DLL	05.7.30 0:00	应用程序扩展
CH341S64.SYS	11.11.5 0:00	系统文件
CH341S98.SYS	07.6.12 0:00	系统文件
ch341SER	11.11.25 7:22	安全目录
CH341SER	11.11.4 0:00	安装信息
CH341SER.SYS	11.11.5 0:00	系统文件
CH341SER.VXD	08.12.18 0:00	虚拟设备驱动
readme	12.10.9 17:51	文本文档
SETUP	12.2.15 0:00	应用程序
安装失败解决办法	15.1.14 12:13	360压缩 RA



After install success, right click "computer" then click "administer" you can find the USB connect as shown in front.

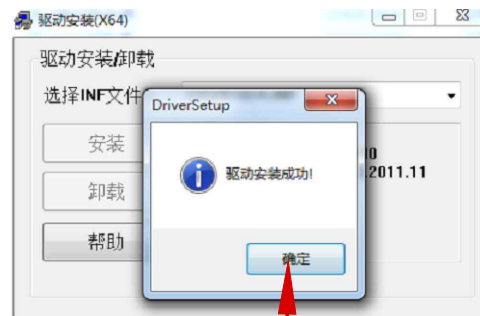
Click SETUP

## Step2



Click Install

## Step3

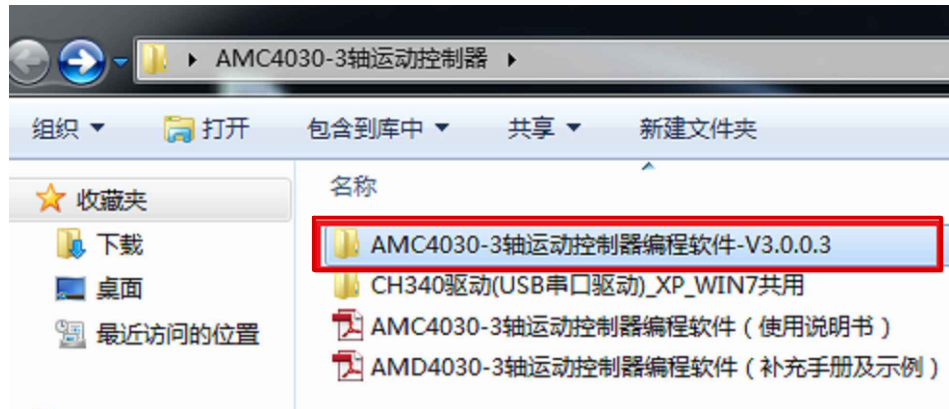


If install success while the USB still not working. Please copy the two file: "serenum.sys" and "serial.sys" in C:\Windows\System32\drivers floder and try again

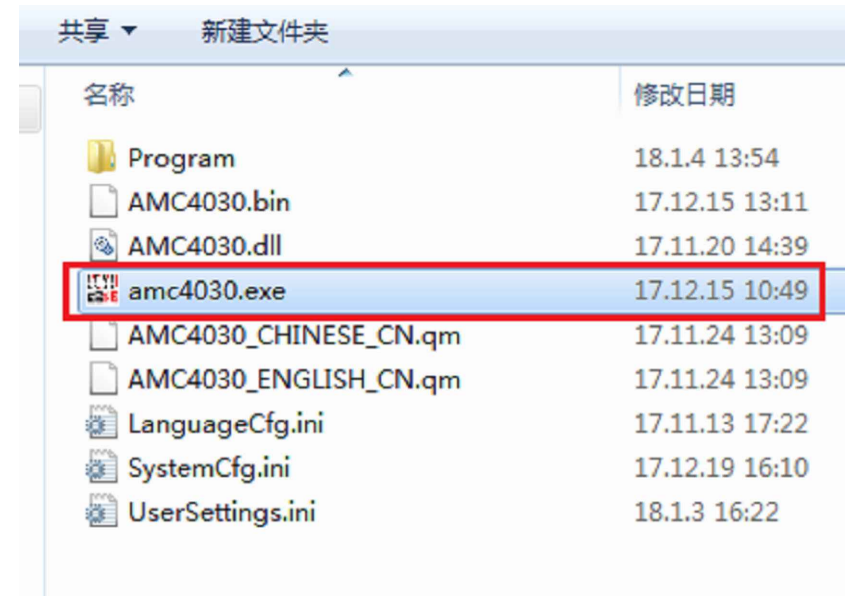
Set up success

# AMC4030-3 axis controller program open program

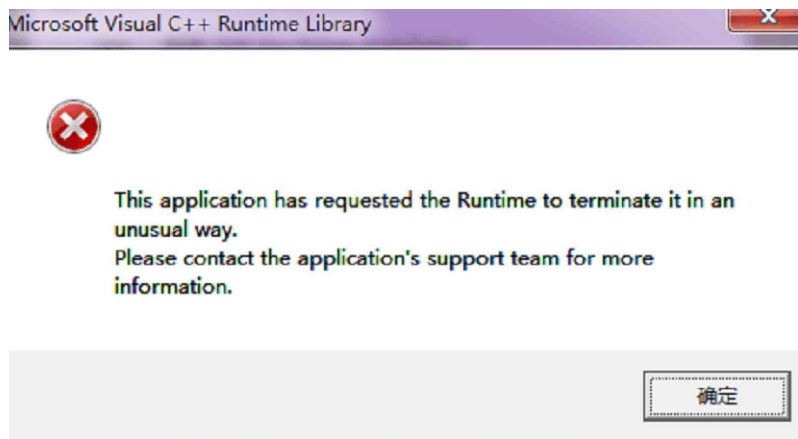
step1. open the folder as shown bellow



step2. open program "AMC4030.exe"



note: When these errors appear please  
download suitable system patch



**effective length of linear guide  
base on the origin point**

**set subdivision impulses  
need for one cycle**

**moving distance that  
motor run one cycle**

**choose the home direction**

**set home back speed (a high  
speed will decrease the accuracy)**

**origin offset**

**choose language**

Chengdu Fuyu Technology Co.,Ltd. AMC4030 - Motion Controller Programming Software For 3 Axis

语言

Current State: The controller is not present

Axis Parameters

	Pulse FCTR=	DIST	/	Pulse NUM	Max DIST	Home DIR	Home SPD	ORGN OFST
X Axis	0.004	= 20	/	5000	200 (mm)	N	20 (mm/s)	5 (mm)
Y Axis	0.004	= 20	/	5000	200 (mm)	N	20 (mm/s)	5 (mm)
Z Axis	0.004	= 20	/	5000	200 (mm)	N	20 (mm/s)	5 (mm)

Other Parameter

SYS ACC: 200 (mm/s<sup>2</sup>)

Buttons: CNCT CTL, MNL OPER, Set PARM, Edite PGM, About, Load PARM, Save PARM, RSTR SET

**download the existing  
parameter in controller**

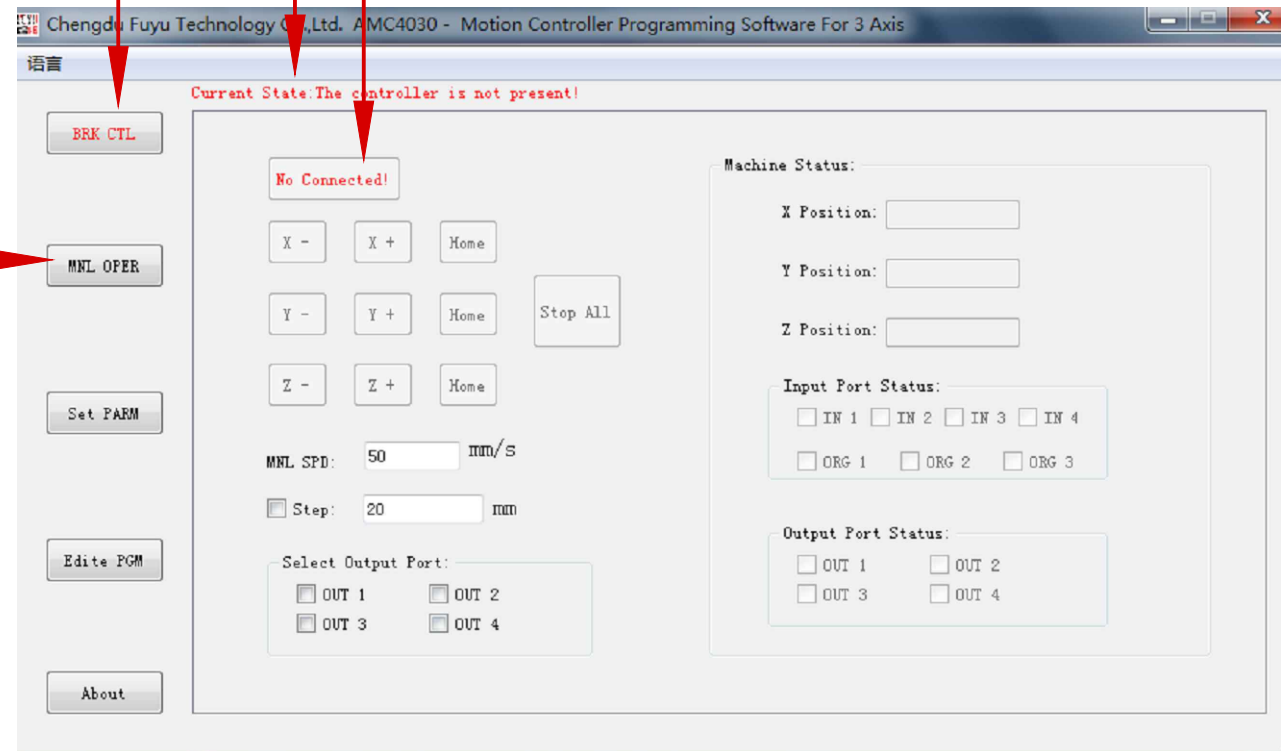
**save the new parameter**

**set acceleration**

# AMC4030-3 axis controller program operate manual interface

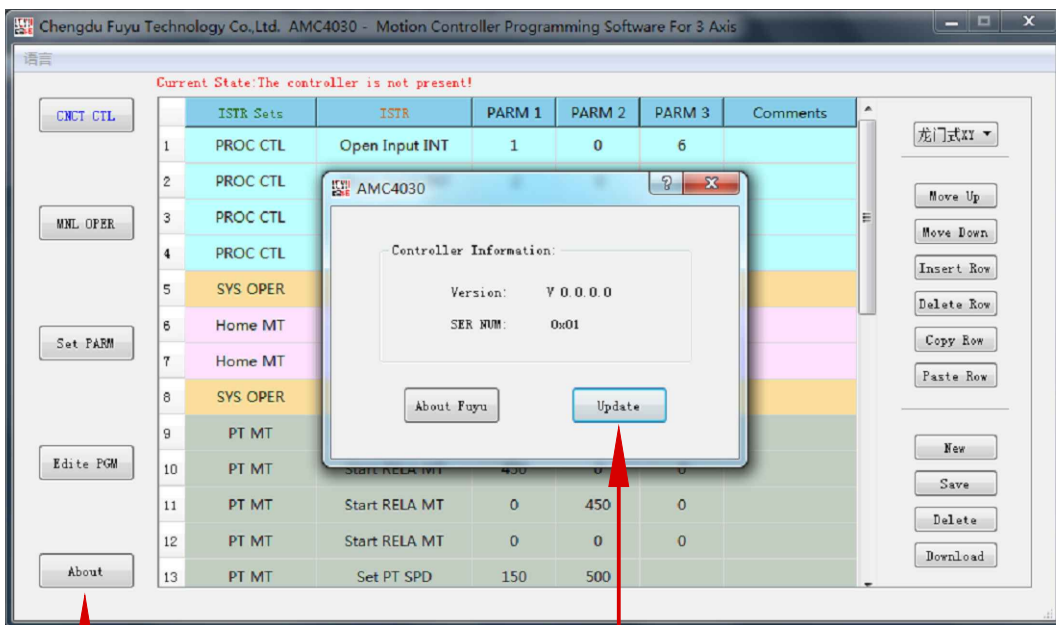
connection status  
connect/break controller  
switch manual control/automatic control

bush button switch  
to operate manual

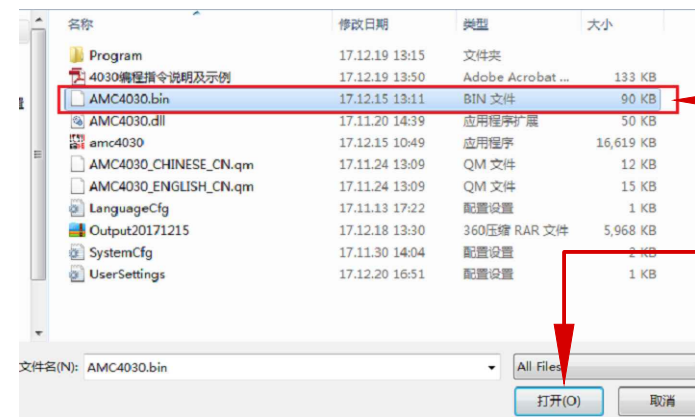


# AMC4030-3 axis controller program program update

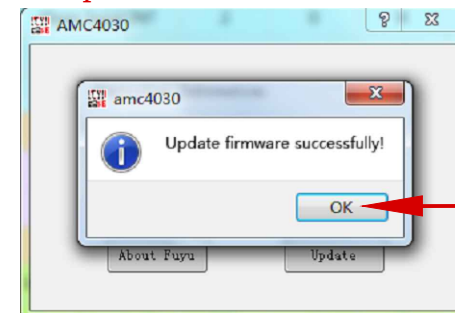
step1



step2

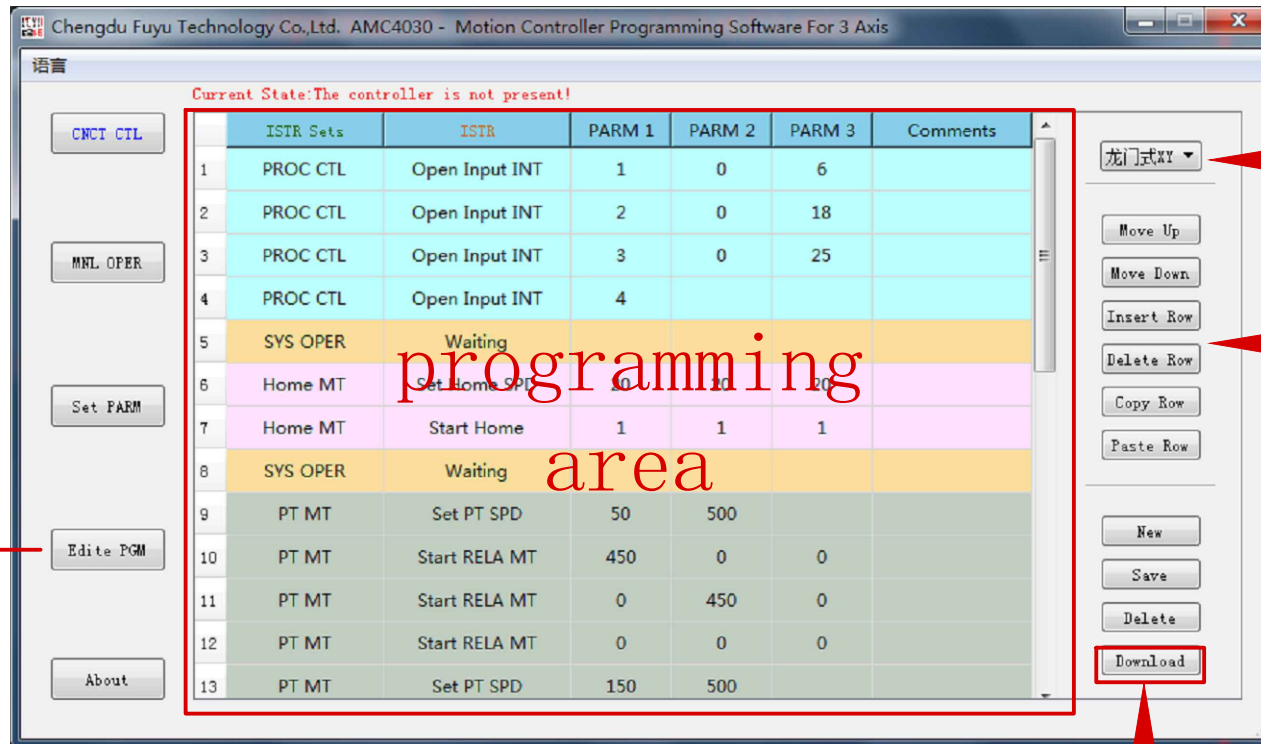


step3





# AMC4030-3 axis controller program programming interface



push button  
switch to  
programming area

choose cases

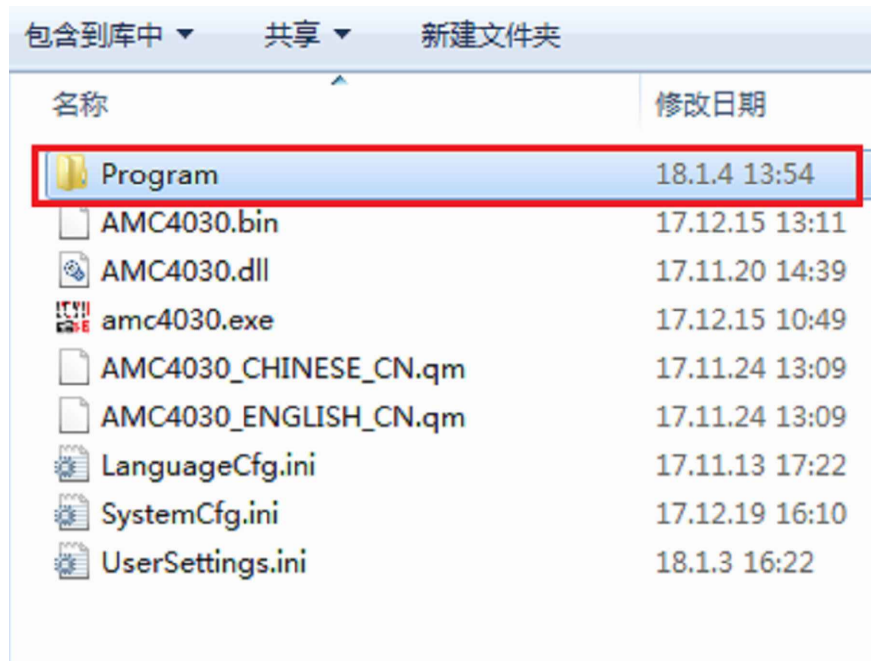
edition instruction

programming  
area

write the program in controller

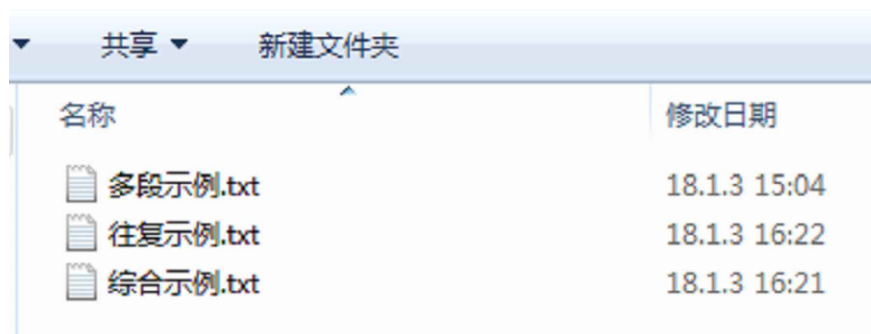
- notes:
1. After editing a new program please connect the controller and write the program in controller
  2. Controller process based on the order in programming area step by step
  3. When the controller running to the blank order or the "stop all" order controller will end the automatic process cannot jump to other line. customer can set a "waiting" order to keep the program running

# AMC4030-3 axis controller program program save location



名称	修改日期
Program	18.1.4 13:54
AMC4030.bin	17.12.15 13:11
AMC4030.dll	17.11.20 14:39
amc4030.exe	17.12.15 10:49
AMC4030_CHINESE_CN.qm	17.11.24 13:09
AMC4030_ENGLISH_CN.qm	17.11.24 13:09
LanguageCfg.ini	17.11.13 17:22
SystemCfg.ini	17.12.19 16:10
UserSettings.ini	18.1.3 16:22

when customer edit a new program  
the the information will be  
saved in the folder "program"



名称	修改日期
多段示例.txt	18.1.3 15:04
往复示例.txt	18.1.3 16:22
综合示例.txt	18.1.3 16:21

paste the suitable format  
document in "program" folder can  
also add the edition program in  
"amc4030.exe"

Instruction Explanation Table SJ1.2

order	ISTR Set	INSTR	PARM1	PARM1 notes	PARM2	PARM2 notes	PARM3	PARM3 notes	INSTR Notes
1	SYS OPER	Stop All	×	×	×	×	×	×	System over,clear all of the data. Cannot running anyother instrucion,unless power off and restart the controller
2		Delay time	Integer	unit:ms	×	×	×	×	System waiting (max:20 days)
3		Waiting	×	×	×	×	×	×	stop the system. Only "Open input INT" available
4	PROC CTL	Program Jump	Integer		×	×	×	×	Can Jump any line
5		Program Loop	Integer	jump line	NUM	Loop time	×	×	After program jump to front line loop time will -1
6		Input Jump	1/2/3/4	IN1/IN2/IN3/IN4	0/1	0(low level)/ 1(high level)	NUM	Jump line	When program running this line and input port is setting condition, program jump to wanted line
7		Open Input INT	1/2/3/4		0/1	0(from 24 to 0V) 1(from 0 to 24V)	NUM	Jump line	During the program process. When input port condition happened, jump to wanted line
8	Close Input INT	1/2/3/4	0/1		×		×	During the program process. When input port condition happened,close the "Open Input INT" Which have set before	
9	Output OPER	Set Output	1/2/3/4	OUT1~OUT4	0/1	0(low level)/1(high level)	×	×	Set the output port voltage(0V or 24V)
10	Home MT	Set Home SPD	Positive NUM	for X axis	Positive NUM	for Y axis	Positive Num	for z axis	Speed Unit:mm/s, Acceleration is "SYS ACC" in "Set PARM".
11	PT MT	Set PT SPD	Positive NUM	Velocity mm/s	Positive NUM	Acceleration mm/s <sup>2</sup>	×	×	velocity and acceleration are vector.Direction from first point to next point
12		Start RELA MT	NUM	moving distance for X axis (mm)	NUM	moving distance for Y axis (mm)	NUM	moving distance for Z axis (mm)	The location of final point is relative to current point.
13		All Axis MT	Positive NUM	X-Coordinate	Positive NUM	Y-Coordinate	Positive NUM	Z-Coordinate	1.For this command program must do a back home before(provide a origin position) 2.After the command process finish.program jump to the following step

- 1.When controller connect with power supply or use pc controll switch to automatic in "CNCT CTL",program will run automaticly.
- 2.Program running from the first line and step by step
- 3.Set "Waiting" and "Open Input INT" in the beginning is an useful method to control the system start
- 4."Stop All" will stop the system, Do not set this order if your want reuse some function

## 1 . Words Abbreviation

AC	Automatic Control	自动控制
ACC	Acceleration	加速度
BRK	Broken	断开
CLR	Clear	清除
CNCT	Concatenate	连接
CTL	Control	控制
CUR	Current	当前的
DIR	Direction	方向
DIST	Distance	距离
EQV	Equivalent	当量
FCTR	Factory	工厂
INT	Interrupt	中断
ISTR	Instruct	指令
MC	Manual Control	手动控制
MNL	Manual	手动
MT	Movement	运动
NUM	Number	号码
OFST	Offset	回退
OPER	Operate	操作
ORGN	Origin	原点
PARM	Parameter	参数
PGM	Program	程序
PROC	Process	流程
PT	Position	点位
RELA	Relative	相对的
RSTR	Restoration	恢复
RVRS	Reverse	相反的
SER	Serial	序列
SET	Setting	设置
SPD	Speed	速度
STAT	Status	状态
SUCC	Successful	成功
SYS	System	系统